

CENTAUR

educating horse and rider as partners

JANUARY 2013

A Peek Inside

Features

Education, Fun and the Big Easy . . .	1
Picture This	1
Carol Lavell Gifted Memorial Fund . .	6
Fun Facts About the Board	5
Breeding Sport Horses	6
Trainer Spotlight, Gwen Ka'awaloa . .	9
New USEF Tests	19

RMDS Information

President's Message	2
Chapter News	3
Things to Know This Month	4
Executive Board	12
Chapter Meetings	13
Calendar	20
RMDS-Sponsored Events	21
Region 5 Report	22
TD & Show Management Cont. Ed .	24
Membership Form	25
Business Ads	26, 27
Classifieds	27

Education, Fun and RMDS in the Big Easy

By Lori Mitchell, RMDS president

Adequan/USDF Annual Convention Recap

Each year the RMDS president makes an effort to attend the USDF Annual Convention and BOG Meeting to make sure that our members have access to a great selection of information presented there. This year was no different. I have been home for about two hours, leaving the warmth of the South this morning and three hours later feeling the sting of winter in Colorado. I have my notes gathered and photos to give you a daily overview here.



Cont'd on pg 8

St. Louis Cathedral in Jackson Square faces a statue of Andrew Jackson.

Picture This

By Barb Young

Or How to Photograph Your Horse (With a Little Help From Your Friends)

For conformation shots and portraits: Put the camera on "portrait" mode (it does make a difference), stand back away from the horse and zoom in toward your subject. This is because for any pose except straight at a horse's side, horses are big enough that most cameras will distort whichever end is closest. We've all seen the big nose or big head or oversized butt. By standing back away from the horse, and zooming in as much as possible, you will avoid much of the distortion, depending on the length of your zoom. Read the manual that came with your camera (you can download it from the manufacturer's website, if you've lost it) about photographing large objects and avoiding distortion. Have at least two other people help, one of whom is an experienced handler with a lot of patience. Horses are not going to stand still for very long, and they get impatient with your adjusting their foot positions. You have to remain calm and patient because the minute you get impatient they will get uncooperative. Remember, horses read our minds and body language. If the handler is upset, put the horse away and try another day. A good conformation shot can take a half hour sometimes. Just walk the horse in a circle and into position, and around in another circle and into position. Don't try to back them up, because they get compressed. You want them happy and relaxed AND in that perfect pose, which means the handler has to remain happy and relaxed, no matter what. Once you get the pose right, you'll need the other person to get ears up with noises, hand waves, or throwing a hat in the air (only if you know this won't spook the horse).

Cont'd on pg 11

NEWSFLASH!

pg
5

FUN FACTS ABOUT THE BOARD
SHANNON LEMONS
LINDA GABER

Information and articles in the Centaur Newsletter are the sole opinion and responsibility of their authors, and not that of RMDS or its Executives.



Lori and (top) Mozart, (left) Worglanz (aka Wally), and (right) Unico GPA

One year has passed since I became RMDS president and what a year it has been. The role of RMDS president has turned out to be a bigger challenge than I ever imagined: The time involved, the road blocks that must be overcome, and the meetings that I am reminded that run way too long. This coming year will be more of the same before I hand over the reins to a new RMDS president.

I now have my feet wet and am ready to hit the New Year with more changes and challenges to

Happy New Year 2013!

better the organization and the sport of dressage. I am super excited to work with the new RMDS board as elected at the Board of Governors meeting at the end of last year and the chapter presidents that have taken on the responsibility for their chapters this year. I look forward to discussing the new year for RMDS with the entire board at our meeting this month.

If you have a suggestion, idea, thought or comment let your chapter president, an RMDS board member, RMDS Central Office or me know. This is your organization; let us help make

it better with your help. You can email me at bandwdressage@aol.com or call my home at 303-816-2375. You can attend a chapter meeting to make your voice heard, too. Get involved this year!

Take a look at the USDF Convention information in this issue. There is some really good information and updates from last month's meetings and educational events in New Orleans. The USDF Convention is always a great experience.

There are some really neat changes taking place to our RMDS Centaur newsletter, too. Linda

Gaber, our new Communications chair, is working hard with Nicole Bizzaro, our interim editor and past Communications chair, to come up with some innovative and creative changes. Look for these in the upcoming months. The Centaur is a great publication for our membership, but the cost to produce it is very high and causes the organization to suffer a large loss at the end of each year. We are hoping that the changes are more cost-effective while still providing the membership with this valuable publication.

Remember the laughter shared with your friends, the joy you have shared with your equine partners, those past and present, the hard work, and the tears shared with your trainer. And as you reflect on the past year, also think of the new one.

May all your circles be round, your changes be clean, your halts be square and your horses be happy.

Better Riding in 2013,
-Lori Mitchell, President, RMDS

"Centering is a quieting of motion without loss of vitality."

– Kenneth Beittel

"The secret in riding is to do a few things right. The more one does, the less one succeeds. The less one does, the more one succeeds."

– Nuno Oliveira

Pikes Peak Chapter

Happy 2013 from the new Pikes Peak president. I'd like to welcome our new and returning board members:

Vice President Heather Petersen
Treasurer Erin Ashby
Secretary Nina Felsenthal
Education Judy Carnick
Awards Shannon Lemons

The primary focus of our small but growing chapter is fun and educational events for all. Towards that end we have some exciting plans for 2013. Among these are another clinic with Gary Rockwell, a trailer safety session, and a preparation-to-show meeting where we will have the opportunity to pick the brains of an "L" graduate, an "r" dressage and sport horse judge and an FEI Level 1 steward. We are so very fortunate to have this depth of experience and knowledge within our chapter.

The most current information for our meetings and events is published on our website, pikespeakdressage.org.

Michelle Anderson, President, Pikes Peak Chapter

Platte River Dressage Chapter

We are looking forward to 2013. Plans are to try to expand membership by promoting a friendly chapter. We have occasional fun, informal gatherings and everyone is welcome, no matter where you are located. Meeting attendance is not required and there is no pressure to do anything (unless you want to) if you are a Platte River member. Please consider joining our chapter if you don't know which chapter to join or want to support a growing non-stressful group.

Laura Speer, President, Platte River Dressage

Colorado Springs Chapter

CSDA would like to congratulate two of our members for their outstanding achievements as adult amateur riders this year.

Joan Stang has completed the requirements for her USDF Bronze Medal with her rides at Third Level. In addition, her horse, Lionheart, was awarded the Performance Bronze *Pb* and Elite designations by the American Trakehner Association. Lisa Brandman, and her horse, Winzerheart, have completed the requirements for the USDF Silver Medal with their efforts this year at Fourth Level and Prix St. George.

For 2013, the CSDA board will be focusing on educational programs and clinics to provide the services the membership has requested. These programs will be designed to encourage and engage our membership base to participate more actively in the chapter.

One of the programs that CSDA has updated this year has been for our Year End Awards. We have widened the candidate pool of potential winners to include all CSDA members who compete and now get the scores directly from the RMDS Central Office, instead of having them submitted individually by each member. Winners have been notified, awards have been ordered and we are anticipating a good turnout at the CSDA Year End awards banquet Sunday, Jan. 13.

CSDA general membership meetings are held the third Tuesday of every month and all CSDA members and their guests are welcome to attend. The agenda, meeting time, location and directions are posted on the website at www.csddressage.org.

Patricia Leech, President, CSDA

Boulder Valley Dressage

Welcome to 2013. Boulder Valley Dressage is looking forward to a fun, exciting and educational year. First up is our ANNUAL BANQUET, when we'll reflect back on 2012 and honor everyone who participated in and volunteered at shows and other activities throughout the year. We're hoping many BVD members will be joining us on January 12, 5:30 – 9:30 at the Boulderado. Next up will be our FIRST MEETING of the year, February 11, 6:30 pm at my house, 2394 Rose Ct., Louisville, 80027. This will be a great opportunity to plan for the year ahead, so if you are interested in getting more involved, come and join us. Along with our two shows, we'll be developing ideas for additional educational activities, looking for volunteers to help with various committees and generally brainstorming about how Boulder Valley Dressage can best serve its members. These meetings are not just for board members, so don't be shy about showing up – we'd love to have your input.

In the meantime, for information about Boulder Valley Dressage and suggestions about how to become more involved, check out our new website at www.bouldervalleydressage.org.

And if you have any questions, concerns, ideas or suggestions, please don't hesitate to contact me at sarahvbarnes@yahoo.com. I'm looking forward to serving as your president for the next two years. Have a great ride.

Sarah Barnes, President, Boulder Valley Dressage

RENEW your RMDS Membership!

Even if you are not planning on competing in 2013, please consider renewing your membership. We will keep you in the loop and up to date for when you are ready to go back in the ring. Most importantly, renewing supports RMDS and helps us continue to promote dressage in the Rocky Mountain region so we will be here when you need us.

Membership renewal will be accepted through the Central Office via check or through PayPal online. Membership fees are \$65.

Upcoming Changes to the Centaur

Starting in February, the RMDS Centaur will print and mail on odd months. Even months will see the launch of a new RMDS e-newsletter. These changes are being implemented as a part of a larger effort to both make our publications and advertising opportunities more attractive and more cost effective.

New RMDS Member Perk

Starting in March, the RMDS Centaur will print one free classified ad, of 50 words or less, per member, per month. Ads must be for horse-related items only; no services can be promoted. Non-member ads are \$20. No photos included in free ad, but may be purchased for \$12. Go ahead, start spring cleaning.

RMDS Membership Cards

You may download your membership card by going to the RMDS website, www.rmds.org. Click on "Forms," then "Membership Card."

Dressage Foundation's Carol Lavell Gifted Memorial Fund Awards \$1,000 to Two Region 5 Riders

By Jenny Johnson

The Dressage Foundation is proud to announce this year's recipients of the Carol Lavell Gifted Memorial Fund Scholarships for Adult Amateurs. Each will receive a \$1,000 scholarship to enable them to set aside quality time in concentrated training with a horse they own, with a trainer of choice, away from the daily pressures of job and family.

"Congratulations to these deserving adult amateurs for being selected to receive a \$1,000 scholarship. Thanks to the generosity of Carol Lavell, her family and friends, we are thrilled to provide this support," said Jenny Johnson, administrative director of The Dressage Foundation. "We hope that each recipient will make the most of the concentrated training time that this scholarship will allow, and we look forward to hearing from each recipient about her experience."

Up to nine \$1,000 grants are available each year (one per United States Dressage Federation region). Additionally, two wild card grants are available, and can be awarded in any region. The following adult amateurs were chosen as recipients from their respective USDF regions to receive grants for training in the 2013 calendar year.

USDF Region 5 - Michelle Dorsey (TX) and her horse, Bertolucci, will train with Sarah Martin. Michelle is a member of Paso del Norte Dressage Society. **Shannon Lemons** (CO) and her horses, Shaman and Deven, will train with Sarah Martin. Shannon is a member of Pike's Peak Dressage Society, a chapter of Rocky Mountain Dressage Society.

The Dressage Foundation is a 501(c)(3), non-profit, tax-exempt, donor-driven organization that is dedicated to supporting and advancing the sport of dressage. The organization solicits contributions, appropriately allocates the donations, and awards grants and scholarships to dressage riders of all ages and levels. For more information, please visit dressagefoundation.org.

Fun Facts About the Board: Linda Gaber, Communications Chair

Lori Mitchell has brought a new column to the Centaur. Each month, learn about our board members through these revealing questions.

1. **What horseperson/rider do you most admire?** Clinton Anderson
2. **The greatest number of horses you ever owned?** 1
3. **Who is the most famous person you ever met?** Boxer Muhammed Ali
4. **What celebrity do you most resemble?** Susan Sarandon
5. **Favorite drink and snack food?** Dark beer and salted peanut in the shell
6. **If the world were ending today, what would be your last meal?** Raw oysters and champagne
7. **Favorite saddle to ride in?** County everything
8. **Favorite grooming tool or product?** Trimmer and scissors
9. **What state/country were you born?** Michigan
10. **Share something about yourself that the RMDS membership would be very surprised to learn about you?** I have been a certified hunter safety instructor

Fun Facts About the Board: Shannon Lemons, Awards Chair

1. **What horseperson/rider do you most admire?** Stefan Peters - he's always so calm but consistent and insistent
2. **The greatest number of horses you ever owned?** My family used to own 25 when we ran an outfitting company
3. **Who is the most famous person you ever met?** Probably Garth Brooks
4. **What celebrity do you most resemble?** The only person close to a celebrity I can come up with is the sharpshooter from Texas in this year's Olympics. There's a photo of her shooting that looks just like me
5. **Favorite drink and snack food?** Diet Coke, trail mix
6. **If the world were ending today, what would be your last meal?** A thick, rare filet with brandy/peppercorn sauce, fettuccinifredo, creme brûlée
7. **Favorite saddle to ride in?** My Albion
8. **Favorite grooming tool or product?** Cowboy Magic
9. **What state/country were you born?** Texas, baby
10. **Share something about yourself that the RMDS membership would be very surprised to learn about you?** I'm extremely shy around strangers

"You get up there and it's incredibly relaxing and it gets your mind off everything because...you're trying to not die, actually."

Carson Kressley on the benefits of horseback riding.

Breeding Sport Horses Requires Knowledge, Vision, Expert Help and a Lot of Luck

By Barb Young

When I was asked to write an article on breeding sport horses, following the success this year of Maude RF at PSG, I said that I could only write from my own experiences. Most breeders first spend hours doing research on bloodlines for their mares and or stallions, trying to produce the top quality of their vision. Most breeders have access to expert breeding help, such as veterinarian support for breeding, mare care, foaling and raising the foal with manners. And most breeders have experience or access to experienced folks for foal handling, manners and advice about bloodlines, registries, inspections and trainers, if needed. As a small sport horse breeder located in western Colorado, starting like many with a vision, not much experience and a lousy location, I was absolutely blessed with luck, and great luck at that, and excellent, expert support.

First I was offered a super well-bred Dutch mare, Delilah (Vosmaer/Zofia/Saluut), because she had been stressed in the womb coming from the Netherlands and wasn't balanced well enough to go much above Second Level dressage, but her genetics were super. When I looked up her sire, Vosmaer, imported to the U.S. by J. Ashton Moore, it turned out he was an excellent broodmare sire, and Delilah's dam was a very successful show jumper in her day. My goal was to breed for form and function for both dressage and jumpers. A couple of years later a friend called and told me to go and see a super young warmblood stallion. That was when I first saw Mannhattan, and fell in love. Delilah and Mannhattan were an outstanding pick and produced 100% Premium Oldenburg NA foals, with three out of eight scoring an amazing 8.5, and two First Premium American Sportponies.

It turned out that Mannhattan was owned by Kathy St. Martin, who was just starting Equine-

After inspection success and sales, the rest of any breeder's story is about the horses' careers.

all through the breeding and foaling and inspection process. I literally could not have done it without them.

...and Even More Luck

After inspection success and sales, the rest of any breeder's story is about the horses' careers. So much luck and sales experience is involved with the right buyer, the right upbringing, the

Reproduction.com, the wonderful travelling horse breeding workshops. In the beginning Kathy and my fabulous repro vet held my hand

right start under saddle and the right training. It takes years and years of hard work on everyone's part, coming through without mishap or injury, making it into the show ring and performing well over and over again. Obviously, we can't always choose our buyers.

Four of my foals wound up in the "right" hands and are having successful show and/or breeding careers, like Maude RF, Maverick RF and Thomas RF, who are having both. The others are performing well and are adored by their amateur owners, and that is really satisfying, too. I owe this part of their story absolutely to the buyers.

Maude RF was Champion Open PSG at Region-



Maude RF

photo: Barb Young

als this year, and Horse of the Year at PSG for Oldenburg North America. She had a very successful career in hand, and was USDF 6th AA at First Level, and 5th at Second Level. She then took a hiatus and produced (by embryo transfer) two Oldenburg NA Premium fillies by Blue Hors Romanov.

Maverick RF was Horse of the Year at 3rd Level AA for International Sport Horse Registry, and stood at stud for several years before his untimely death due to complications from an injury.

Margo J shone in hand as a 5-year-old (Champion Mare) and has done well at both dressage and hunters.

Airborn Rainbow, now Petra Lila, was approved by the WPN (Dutch) and produced two Dutch Top 10 (twice each) colts.

Margaret RF, after a minor injury to her stifle, rehabbed back home with me, and is now winning at competitive trail riding with her teenaged owner and starting a breeding career in Arizona.

Thomas RF, a sport pony out of Delilah by *Telynau Braveheart, was sold to New Zealand as a foundation sire for their Sports Pony program. He was champion in hand at a warmblood show there, and now has begun a winning career as a show jumper.

Barb Young own's Barb Young Photography and operates Rainbow Farm Horse Boarding in Menoken.



Delilah*

photo: Barb Young



Mannhattan*

Photo: Reg Corkum

Education, Fun and RMDS in the Big Easy

Cont'd from pg 1

Arrival for me was on Wednesday, though I didn't have any responsibilities until Thursday I managed to look at the various baskets from the GMOs across the USA. The RMDS basket was a bit small in comparison and we will need to work on that for next year. I was very lucky that my name was drawn for the Southern Eventing and Dressage Association basket, which included a plethora of items from New Orleans. This kept me from doing too much shopping for other souvenirs.

Thursday morning I woke up at what seemed to be way too early to be a participant in the "ABC's of Rider Strength & Fitness with CORE-Ect Riding" by Kerry Petty. Many fellow dressage early-risers attended the hour-long workout of yoga poses mixed with some Pilates exercises to make our bodies more fit for riding. The goal of the 6:30 a.m. morning class was to give each participant five "CORE-Ect" poses/exercises each day to build a program that could be done at home.

After a meeting for delegates to explain the rules of the BOG and to see the 2013 Budget before the BOG began the next day, I headed into our Region 5 Meeting. Heather Petersen, our regional director, conducted the meeting over two days while Joan Clay took detailed notes. It was great to see so many familiar faces in the meeting: Rusty Cook, Janet Foy, Dolly Hannon, Sarah Martin, Kathy Simard, Kristi Wysocki, Pete and Sharon Soos and many others who were from Arizona, Montana and Utah. Make sure you look for Heather's recap of the meeting. There was some good information from PM delegate discussion to Western Dressage.

"Carbohydrate Conundrum" by Dr. Emily Lamprecht was an informative presentation of the importance of carbohydrates, and tips on how to safely and effectively incorporate them into any horse's diet. Carbs are often misunderstood in both human and horse diets. Dr. Lamprecht reminded all in attendance that the horse is not a human and should not eat like one. The audience was shown slides on the horse's digestive system, and when and how colic occurs, and

how the food source of a horse is broken down into "mega calories" and NSC, and how to manage and calculate for your horse.

On to a quick lunch and then headed into the GMO Meeting. Anne Sushko conducted the meeting as the USDF chair. It was interesting to me to find out that RMDS has a regional GMO representative. This person is there for the organization to discuss issues or thoughts we, as a GMO, might wish to talk about with USDF. The mission statement of this committee is "to accelerate the growth and development of the GMO and to broaden and strengthen the dressage community and increase access to education." This past year our region did not have a GMO Volunteer of the Year, but the topic was discussed that in the coming year a GMO can have more than one if there is a team of volunteers that have worked on something that qualifies them to be nominated for this award. Another topic of discussion was what are the benefits of joining a GMO (RMDS) and that we need to let members know what those benefits are and what the benefits are of being a GMO (RMDS) member of USDF. There was some serious discussion on the topics.

Membership Committee meeting was my next stop. This committee is working on a USDF member satisfaction survey that you will be seeing soon. USDF is trying to get ideas of what is important to us as members. This committee has a new philosophy of retaining members and what they need to do to achieve that goal. This USDF Committee is also embracing the new philosophy that "USDF represents ALL members" and hoping to dispel the old perceived philosophy that USDF only cares about those who are PM (participating members) because they bring in more dues.

Topping off the day was a presentation by Hilda Gurney as she introduced her topic for the 2013 Nutrena/USDF Adult Clinic Series, "Harmonizing with Your Horse" that will start in April. Harmony between horses and riders is a result of many factors that affect both. The horse's ability to achieve harmony with their human rid-

ers is influenced by: quality of gaits, ability to achieve uphill balance, temperament, trainability, early handling and ground work, introduction to saddle, bridle and rider, the quality of their training and how well they are ridden. Consistent training routines, as well as quality feeding, hoof care, veterinary care and housing, are also necessary ingredients for success in achieving harmony between horse and rider. She showed slides and video of her horses and trainers/students riding some of her young horses to express these ideas. Make sure you check the upcoming USDF Connection and RMDS Centaur to attend her Region 5 presentation.

Friday began the Board of Governors meeting. This year the meeting was done two hours earlier than scheduled which everyone in attendance was pleased about. The meeting does go over two days, so knowing that there was some free time on Saturday warmed my heart. George Williams, USDF president, conducted the meeting with some special presentations on "Those We Have Lost this Year" which was an emotional moment for all in attendance. George also presented the details on the USDF Dressage Finals to be held in November in Lexington, Ky. There were no bylaw changes, so there was no discussion. The budget was passed unanimously. USDF has been operating in the black and hopes to continue that trend. During the BOG, awards were given to our own RMDS members for articles that they wrote in the RMDS Centaur. We are so very proud of those individuals. I hope to see many more recipients in the future for articles submitted and photography, along with a GMO Volunteer of the Year.

"Degenerative Joint Disease in the Equine Athlete," presented by Dr. Victoria Maxwell, dealt with challenges of the modern equine athlete. Dr. Maxwell provided slides and explanations on what DJD is, using pictures and terms like "Christmas Garland" to give visuals to long scientific words. Dr. Maxwell does work for Adequan and explained why we dose our horses in the 1-4-7 (1 dose, every 4 days, 7 vials) program as outlined on their website. I am working on talking to Dr. Maxwell to see if I may obtain her

Cont'd on pg 23

Trainer Spotlight – Gwen Ka'awaloa

By Gwen Ka'awaloa, vice president of RMDS

Tell us about your riding history – When did you begin riding and in what discipline, if not dressage? What factors drew you to focus on dressage?

I started riding at age 8 in a hunter/jumper lesson program. My first pony did English and Western so I rode both for a while. I loved jumping so I worked on my equitation and eventually earned my AHSA Hunt Seat Medal at 16. I then tried eventing and loved the cross country phase. Dressage was the part I learned last, but quickly realized I needed this in order to win. My first event horse, Akela, went on to Intermediate Level, but after completing two courses I realized that I did not have the guts to continue at this level. So dressage was the new focus. I had Quarter Horses and Appaloosas up to this point and my last mare Freckle Bar, showed through 3rd Level. I had the good fortune to meet Kathy Mayhew and her horse Moselle through my student, Michelle Anderson. Through a lease I was able to achieve my first dream of riding FEI. In just two years Moselle went from a 2nd Level horse to Prix St. George and Intermediare I. That was the beginning of my dressage addiction.

What are some of your professional accomplishments in dressage besides the Gold Medal you've recently achieved. What is your next goal?

As a hunter/jumper rider, I earned my AHSA Hunt seat medal in 1976. In eventing, I won or placed in the top three at Preliminary Level with my horse Akela, a Quarter Horse.

With my Appaloosa mare, Freckle Bar, I showed through Third Level, winning several Freestyle classes. With Moselle, a Dutch mare, I placed in the top 10 at several CDIs in Colorado, Arizona and California at Prix St. George and Intermediare I. We placed in the top five several times in the Intermediare Freestyle.

With Grimeur, Dutch gelding, we went from SecondLevel to Intermediare II in four years. Both Moselle and Grimeur were lost suddenly and their careers cut short.

My final goal was realized this year with the completion of my Gold Medal and performing a Grand Prix Freestyle on Safarie, my Dutch gelding.



Gwen and Akela in 1976 at Tongg Ranch.

Currently, my goal is to take my mare Awentia, a homebred, half sister to Safarie, to Grand Prix.

What do you feel is your greatest strength as a trainer or instructor?

Working with students who need confidence and helping them find their way. In the '80s and '90s most of my students were Pony Clubbers. Some went on to get their B and A ratings. Others became trainers, some competed in junior and young rider championships. Now I work mostly with adult amateurs and help other trainers as friends.

Tell us something that most fellow dressage riders may not know about you.

While riding as a young person I also studied and trained in Kodokan Jujitsu. I eventually earned my black belt. Later I trained with a mixed martial arts school earning another black belt.

My final goal was realized this year with the completion of my Gold Medal and performing a Grand Prix Freestyle on Safarie, my Dutch gelding.

I have a bachelor of science degree in animal sciences from Colorado State University.

I am now retired but for nearly 12 years I was a volunteer firefighter and EMT-Intermediate for Elizabeth Fire Protection District.

My son, Chad, and I own and run OnSite EMT's.

My son is my proudest accomplishment. Chad is a self-employed farrier, a firefighter EMT and lieutenant with Elizabeth Fire Protection District. He was a successful youth competitor with several of his Appaloosa horses and he now helps his long-time girlfriend with her Quarter Horse business (Dawning Performance Horses, Miya Childers).



Aim Higher and Achieve More with ANDRIA ALLEN

Another great year in the local real estate market!

All indicators point to a second year with a strong recovery in the real estate market - nationally and locally.

2012 was an incredible year with increased property sales, shorter time on market, a slight increase in sales price and record low interest rates. The low interest rates will be a strong factor in home sales. However, a continued decrease in sales inventory will impact the market even more. If you're thinking of selling your home or property, give me a call. I'll be happy to provide a free market analysis for you. Call today as the time is right to list your home.

Boulder Area Single Family Homes- November 2012 Statistics

Location	# Sold		% Chg	Med. Sales Price		% Chg	Avg. Days to Contract		% Chg	Inventory		% Chg
	Nov. 2011	Nov. 2012		Nov. 2011	Nov. 2012		Nov. 2011	Nov. 2012		Oct. 2012	Nov. 2012	
Boulder	47	61	29.8%	\$536,000	\$599,000	11.8%	121	101	-16.5%	276	217	-21.4%
Broomfield	46	49	6.5%	\$301,955	\$289,950	-4.0%	139	73	-47.5%	261	205	-21.5%
Erie	12	37	208.3%	\$301,130	\$323,950	7.6%	74	71	-4.0%	182	143	-21.4%
Lafayette	18	33	83.3%	\$288,000	\$295,700	2.7%	124	86	-30.6%	109	69	-36.7%
Longmont	53	92	73.6%	\$218,500	\$210,250	-3.8%	82	80	-2.4%	408	308	-24.5%
Louisville	16	17	6.3%	\$366,500	\$413,000	12.7%	119	55	-54.0%	63	50	-20.6%
Superior	11	11	0%	\$392,500	\$391,000	-0.4%	92	68	-26.1%	42	26	-38.1%
Mountains	26	17	-34.6%	\$341,000	\$329,200	-3.5%	182	165	-9.3%	221	183	-17.2%
Plains	25	34	36.0%	\$485,000	\$555,900	14.6%	123	106	-13.9%	286	231	-19.2%
Total	254	351	38.2%									

NEW LOWER PRICE!



3714 COYOTE TRAIL, LONGMONT

MLS# 691194. NEW LOWER PRICE: \$599,000
3.8 acres surrounded by 80 acres of open space. 3-stall barn/shop w/runs. Custom home features 4 beds, 5 baths, fully finished daylight basement. Perfect equestrian property!!



1045 W 154TH AVE, BROOMFIELD

MLS #687336.
NEW PRICE \$499,900
3.21 acres, two stall barn, two cross fenced pastures, huge garden, 2048 sq ft tri-level home with 4 beds, 3 baths. Irrigation water for pastures, well water for garden and city water for house.



10774 COUNTY ROAD 22, FORT LUPTON

MLS #689705. PRICE \$325,000. 9.75 acres with 4 stall pole barn, tack room, pipe runs. Large arena. Two cross fenced pastures. Shed row. Home features a lg master upstairs, 2 beds on main, 2 baths, walkout basement with hobby room and shop. Convenient location halfway between Firestone and Ft Lupton.



ANDRIA ALLEN

Aim Higher and Achieve More

Visit my blog for more interesting information, statistics and articles about the real estate market at www.andriallen.wordpress.com



To see photos and more information about any of these properties, please visit my website at

www.AndriaAllen.com

• 303-810-8375



Picture This

Cont'd from pg 1

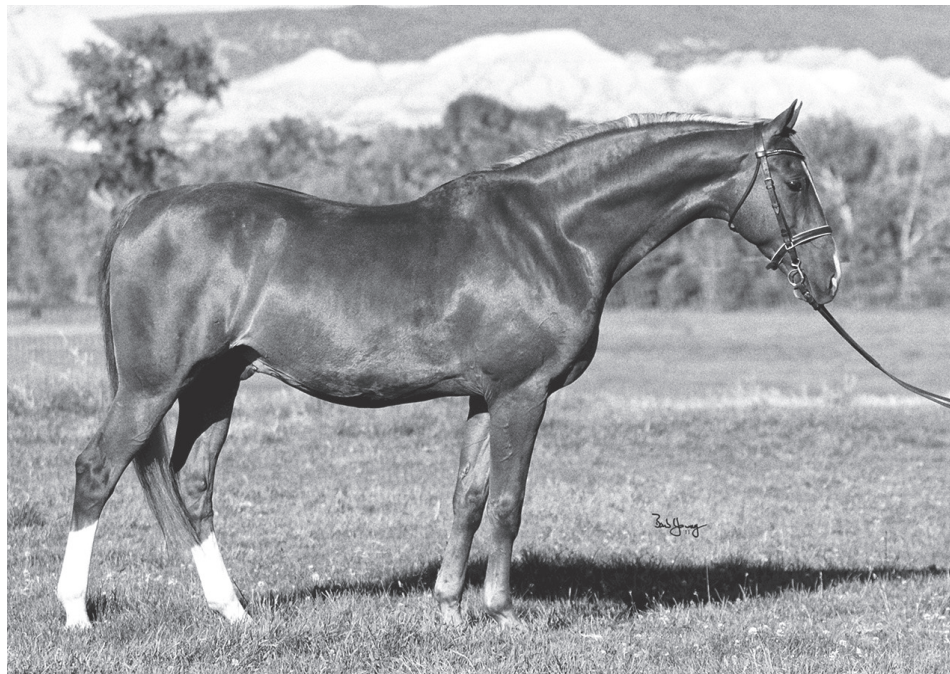
Try for a good background, clean or plain with no distractions. You want people to focus on the horse, so the plainer the background the better. Aim level with the shoulder blade, so lower your body (in most cases, except shorter people) and take one or more shots aimed at his shoulder, one or more at his mid section and one aimed more toward his hip. If all else is the same, these different angles should give you the most flattering angle for your particular horse.

For movement shots: Set your camera on the sports mode. It does make a difference. Again, stand back and zoom in and count strides. It will take practice to get used to the shutter delay that most point and shoot cameras have, so you can get the stride right. Don't just push the button down and click, click, click, aka "spray and pray," because the camera will time with the stride on average, so if you have the wrong point in stride, every shot will be equally wrong.

Point and shoot cameras usually have a shutter delay so when you click the button the camera doesn't capture the image right away, but "waits" a bit before it actually captures the shot. Even the least expensive SLR camera (like the Canon Rebel) won't have this delay. Best to get a starter SLR camera and a zoom lens (to at least 150mm) If you just can't spend that much (\$800 or so, probably), then absolutely buy the most expensive Canon or Nikon point and shoot camera that you can afford. Also B & H Camera (BHphoto.com) and KEH.com both are reliable sources of used equipment, as well as good customer service and info on their websites to answer your specific questions. They are way more knowledgeable than electronics stores.

For your pets: Get down on their level, stand back and zoom in. You'll get much better shots, when you're down on the ground. Promise!

Send your photography questions to me at Barb@BarbYoungPhotography.com. Susan DeSylvia said she'd help out with video questions, too.



2013 RMDS EXECUTIVE BOARD

President	Lori Mitchell	303-816-2375	bandwdressage@aol.com
Past President	Simone Windeler	719-287-2040	simonedressage@gmail.com
Vice President	Gwen Ka'awaloa	303-616-4363	Kaimana_co@hotmail.com
Secretary	Heather Petersen	719-683-8435	slush@drwgw.net
Treasurer	Sharon Soos	303-904-7534	sksoos@mesanetworks.net

PERMANENT COMMITTEES

Adult Amateur	Jennifer Glass	719-749-2293	aglas25@msn.com
Awards	Shannon Lemons	719-686-0064	lemons_shannon@yahoo.com
Results	Central Office	720-890-7825	rmids@rmids.org
Communications	Linda Gaber	785-470-7569	writers@evcohs.com
Centaur Editor	Linda Gaber	785-470-7569	writers@evcohs.com
Centaur Production	Nicole Bizzarro	720-890-7825	rmids@rmids.org
Omnibus Advertising	Central Office	720-890-7825	rmids@rmids.org
Omnibus Production	Nicole Bizzarro	303-939-0110	nicbiz@indra.com
Webmaster	Michael Petersen	719-683-8435	webmaster@rmids.org
Constitution, By-laws	Central Office	720-890-7825	rmids@rmids.org
Education	Jon Haugen	970-217-7820	defiancesport@q.com
Insurance, Show Standards	Central Office	720-890-7825	rmids@rmids.org
Junior/Young Riders	Julie Haugen	970-290-8360	defiancesport@q.com
Junior Camp 2013	TBA		
Marketing	Sharon Soos	303-904-7534	sksoos@mesanetworks.net
Membership and Horse Registration	Central Office	720-890-7825	rmids@rmids.org
Registration Officials and Show Standards	Central Office	720-890-7825	rmids@rmids.org
RMDS Show Liaison	Laura Speer	970-371-2934	Riversidestables_evans@yahoo.com
Scheduling	Central Office	720-890-7825	rmids@rmids.org
Scholarship	MaryJo Hoepner	719-495-3648	scholarship@rmids.org

CHAPTER PRESIDENTS

Arkansas Valley	Catherine Siemiet	719-942-5311	catsbarn@aol.com
Boulder Valley	Sarah Barnes	303-817-2783	sarahvbarnes@yahoo.com
Colorado Springs	Pat Leech	719-749-2860	pat.leech@skybeam.com
Foothills	Lori Mitchell	303-816-2375	bandwdressage@aol.com
Grand Valley	Tammy Fagan	970-858-1604	tfagandressage@wyoming.com
High Plains	Wendy Cibis	720-570-6413	wcibis@comcast.net
Northern Colorado	Renee Martig	970-278-0500	silverpony@frii.com
Pikes Peak	Michelle Anderson	303-646-1375	michand@hotmail.com
Platte River Dressage	Peter Soos	303-956-5850	pssoos@mesanetworks.net
Wasatch Mountains	Sally Shaffer	435-655-3323	sshaffer4@yahoo.com
Western Colorado	Barbara Graham Terry	970-963-4649	bgterry1@comcast.net

GOVERNING BODIES

United States Dressage Federation (USDF)	859-971-227	www.usdf.org
--	-------------------	--------------

4051 Iron Works Parkway, Lexington, KY 40511

USDF REGION 5

Director	Heather Petersen	719-683-8435	slush@drwgw.net
FEI JRYR Coordinator	Joan Clay	970-420-0887	jncay@comcast.net
Website			www.usdfregion5.org

US Equestrian Federation, Inc (USEF)	859-258-2472	www.usef.org
--	--------------------	--------------

4047 Iron Works Parkway, Lexington, KY 40511

RMDS is a USDF Group Member Organization and RMDS members are automatically USDF Group Members.

©2013 The Centaur is the official publication of the Rocky Mountain Dressage Society. Its content may not be reproduced in print or electronic media without permission of the publisher. Copying for personal or educational use is allowed. Editorial questions, article suggestions, article submissions, corrections, and letters to the editor may be sent to: Linda Gaber, Editor, The Centaur; phone: 785-470-7569; email: writers@evcohs.com. Advertising questions and should be directed to: RMDS Central Office, 2942 Park Lake Dr., Boulder, CO 80301; phone: 720.890.7825; email: rmids@rmids.org.

RMDS CHAPTER MEETING SCHEDULE

Arkansas Valley: 4th Tuesday, 6 pm, Sunflower Bank in Canon City. Catherine Siemiet, catsbarn@aol.com

Boulder Valley: 2nd Monday, even months, location TBD, Sarah Barnes, 303-817-2783 sarahvbarnes@yahoo.com

Colorado Springs: 3rd Thursday, for location information, contact Pat Leech, 719-749-2860, pat.leech@skybeam.com, www.CSDressage.org

Foothills: quarterly meetings, location TBD, Lori Mitchell, 303-816-2375, bandwdressage@aol.com

Grand Valley: 2nd Thursday each month, location TBD, Tammy Fagan, 970-858-1604 tfagandressage@wyoming.com

High Plains: Bi-monthly meeting, location TBD, Wendy Cibis, 720-570-6413, wcibis@comcast.net, www.highplainsdressage.com

Northern Colorado: 3rd Tuesday, each month, location TBD, Renee Martig, 970-278-0500 silverpony@frie.com

Pikes Peak: 2nd Tuesday of each month, location TBD, Michelle Anderson, 303-646-1375 michand@hotmail.com

Platte River Dressage: Meeting time and location TBD, Peter Soos 303-956-5850 psssoos@mesanetworks.net

Wasatch Mountains: Location TBD, Sally Shaffer, 435-655-3323 sshaffer4@yahoo.com

Western Colorado: Barbara Graham Terry, 970-963-4649 bgterry1@comcast.net

RMDS EXECUTIVE BOARD MEETING SCHEDULE

All RMDS Executive Board meetings are open to all and occur on the second Thursday of every odd-numbered month. Meeting time is 6:30 pm. Meeting dates in 2013 may be variable, please check the calendar or the website. Contact the RMDS Central Office for location. Steering Committee meetings are held on the second Monday of every even-numbered month. Board of Governors' meeting is held the second Saturday of November. Contact the Central Office for precise details.

RMDS BRIDLE TAGS MAKE GREAT GIFTS!

Only \$50 for 2
Contact RMDS Central Office
(720)890-7825



ELBERT, COLORADO
40 minutes from Colorado Horse Park
70 minutes from Littleton Equine Medical Clinic

SERVING THE ROCKY MOUNTAIN REGION

EAGLE'S WING
EQUINE THERAPY & REHAB CENTER

The Ultimate Therapy and Rehab for Your Equine Athlete


EAGLE'S WING EQUINE THERAPY AND REHABILITATION CENTER is the perfect place to bring your horse for surgical recovery, injury layup, therapy and rehabilitation or even just conditioning after a long lay off.

EAGLE'S WING'S facilities are state of the art design and provide safe, quality surroundings for your horse. Our staff includes two veterinarians, experienced trainer, and 24 hour caretakers with years of experience in caring for the equine athlete.

AMONG OUR SERVICES WE OFFER:

Post Surgical/Injury Care • Orthopedic/Soft Tissue Rehab
Wound Treatment/Care • 24 Hour/Day Care • Equine Transport
X-ray, UT • Horsegym Treadmill • Shockwave Therapy
Laser Therapy • Pulse Electromagnetic Therapy • Micro-current Therapy
Chiro/Acu Therapy (DVM) • Customized Turnout/Stalls
Personalized Feeding Program • Corrective Shoeing

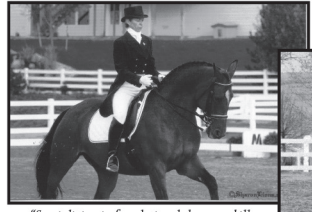
www.eagleswingequine.com
eagleswingequine@gmail.com • Elbert, CO
303.648.9877



StoneGateRanch
Horse Boarding, Training, Lessons

INVITES YOU...
For Lessons & Training With:

JOAN CLAY

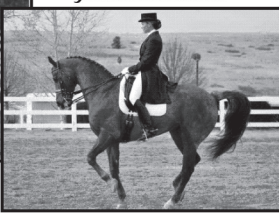


"Specializing in foundational dressage skills to enhance your equestrian pursuits."

- USDF Bronze & Silver Medalist
- RMDS Technical Delegate
- Lesson horses available

970-420-0887
jncay@comcast.net

JESSICA GREER



"Providing correct training for horse & rider."

- USDF Bronze, Silver & Gold Medalist
- USDF "L" Graduate
- Available for clinics, judging & training

970-581-5613
jessicagreerdressage@hotmail.com www.jessicagreerdressage.com

3628 N Taft Hill Rd, Ft Collins, CO
970-430-0181 www.stonegatehorses.com

The Centaur Newsletter

The Centaur newsletter is published monthly. To guarantee that ads and articles will run in a given month, they must be received by the 7th of the month prior to the month of publication, i.e. January 7th for the February edition. If not received by the deadline, articles and ads may be placed in the following issue, if not time sensitive.

CONTACT INFORMATION

For article suggestions, articles, columns, letters-to-the-editor: Centaur Editor, Linda Gaber. Phone: 785-470-7569, email: wrlders@evcohs.com

ADVERTISING

RMDS Office, Beth Geier, 2942 Park Lake Dr., Boulder, CO 80301, Phone: 720.890.7825, email: rmds@rmds.org

DISPLAY ADVERTISING

For information about corporate advertising and/or sponsorship, please contact Beth Geier (contact info above.)

Artwork (ads) must be provided in electronic format. Acceptable forms include: jpeg, pdf, tiff, eps, and doc. IF UNSURE ABOUT AD FORMATTING, please contact the editor (contact info above) for consultation. No substitutions may be accepted. If your ad is submitted in a file format other than those listed above, you will be contacted regarding an additional charge for reformatting or redesign. Hourly charge for redesign/reformat is \$50, in minimal units of one hour.

Please be sure to include a printed version of your ad with your payment so that the ad may be proof-read against the electronic version. Printed ad copy cannot be used as final art.

CLASSIFIED ADS

Classified ads may be submitted via email to the RMDS office (address above.) You may also type or hand-write a classified ad and mail it to RMDS headquarters, attn: Beth Geier, The Centaur. Please limit your classified ad copy to 50 words or less. Exceeding 50 words will result in additional charges per line.

PAYMENT AND AD COPY DELIVERY

Email ads to: rmds@rmds.org, and cc the electronic copy to nicbiz@indra.com. Send payment and hard-copy to the RMDS office, Beth Geier, 2942 Park Lake Dr., Boulder, CO 80301.

AD RATES AND SIZE SPECIFICATIONS

Classified \$20 per item for sale (includes web listing.) 50 words maximum. Classified w/photo \$32 per item for sale.

Full Page	\$150	7" x 9.5"
Half Page	\$90	7" x 4.5"
Outside back half	\$105	7" x 4.5"
1/4 Page (Vertical Only)	\$55	3.25" x 4.5"
1/8 Page (Business Card)	\$30	3.5" x 2"

(horizontal only)

Ask about discounts for multi-month or annual ad contracts.

Payment for ads is due on the 7th of the month. If not received by the following 7th of the month, the person will be listed on the RMDS website under the suspended category.

EDITORIAL POLICY

Articles submitted for publication will not be returned. Please contact the editor before submitting unsolicited articles or photos. Articles represent the work and views of their authors, and not necessarily that of RMDS, its officers or employees.

Utilize the RMDS Network

Trainers and Instructors

Use the RMDS Website to Build New Business

If you wish to increase business, you can place your information on the RMDS website at very low cost. Send information to: RMDS Central Office, 2942 Park Lake Dr, Boulder, CO 80301, Phone 720.890.7825, or email: rmds@rmds.org (note on subject line "Trainer Info".) Please include your name, phone, address, email, training locations and other pertinent info such as awards, certifications, lesson types, schooling horses, etc.

The website averages 200 hits per month on the trainer page and RMDS receives 25-30 emails per month requesting names of trainers in the RMDS region. Don't miss the opportunity to expand your client base and gain recognition.

Cost is \$50 annually. Mail check to: RMDS Central Office, 2942 Park Lake Drive. Boulder, CO 80301.

Advertise Events on the RMDS Website

Website ads on the RMDS site provide your event with high visibility. Your ad will run for one month from the date it first appears. Unless the RMDS Central Office is notified in advance (rmds@rmds.org), the ad will be removed from the website once the date of the event advertised has passed.

Please limit content of the ad to 20 words. Your email and website addresses will be displayed as links.

Because of the implicit connection to the RMDS, we reserve the rights to:

- Refuse any ad.
- Edit ad content.
- Limit the number of ads displayed at any one time.

Important Info on RMDS membership

Awards are based on the information on your membership card. Be sure to double-check everything very carefully.

Duplicate cards are available for \$2.00. If emailed to you, they are free. Request a new one by mailing the Central Office at rmds@rmds.org.

Proof of AA status must be sent to the Central Office every year. Showing proof at shows is not enough for the year-end awards. Owner, rider, and horse **MUST** be current members **PRIOR** to any ride for the score to count towards qualifying for RMDS Championships and for qualifying for any year-end award. If PONY is not listed under breed and you have a pony, send a copy of the measurement form or the permanent pony card to the Central Office. Remember, membership and its details are your responsibility. Be sure corrections are made.

Technical Delegates, Judges, and Certified Instructors

Dressage Judge Ratings and Levels Qualified to Judge

Any class ridden before a judge not qualified to judge at that level must ride "Hors d'concours" where the score does not count.

Status	Status	Levels	Status	Status	Levels
"L"	Learner*	Training - Second (RMDS only)	"S"	Senior	All
"r"	Recorded	Training - Second	3* (FEI C)		All
"R"	Registered	Training - Fourth	4* (FEI I) International		All
			5* (FEI O)		All

*may only judge at RMDS recognized shows.

FEI PARA Dressage 3*

Kristi Wysocki 303-648-9877

FEI 4*

Janet Foy^ 719-260-1566

FEI 3*

Sandra Hotz ^ 303-817-2030

USEF 'S'

Janet "Dolly" Hannon ^* 303-919-4112

Sandra Hotz ^ 303-817-2030

Anita Owen 303-953-9904

Debbie Riehl-Rodriguez ^* .. 303-263-0768

Kristi Wysocki ^* 303-648-9877

^ = FEI Young Horse Certified

* = Dressage Seat Equitation Certified

USEF 'r'

Loni Gaudet 985-966-3832

Amy Jablonovsky 970-493-2833

Gwen Ka'awaloa 303-917-3679

USDF 'L' Graduates (Schooling and RMDS

Only recognized shows)

*Denotes Graduation with Distinction

Simone Ahern * 719-749-9274

Julie Burt 719-431-2342

Linda Coates-Markle 303-469-0279

Alex Curnutte* 303-906-7083

Kathleen Donnelly* 970-310-8729

Beth Geier 303-673-9840

Jessica Greer 970-581-5613

Julie Haugen* 970-290-8360

Sarah Martin * 719-379-3716

Linda Ohlson-Gross * 303-840-9818

KC Parkins-Kyle 303-841-9953

Kathy Simard* 720-981-4448

Stephanie Soule* 970-201-0747

Simone Windeler 719-287-2040

Dressage Sport Horse Breeding Judge

Janet Foy 'R' 719-260-1566

Gwen Ka'awaloa 'r' 303-917-3679

Debbie Riehl-Rodriguez 'R' 303-263-0768

Kristi Wysocki 'R' 303-648-9877

FEI Level 1 Dressage Steward

Rusty Cook 505-877-1456

Heather Petersen 719-683-8435

Dianne Stanley 406-652-4061

Technical Delegates USEF

Eva-Maria Adolphi (UT), r.. 801-254-3247

Rusty Cook (NM), r 505-877-1456

Laurie Mactavish (CO), R . 970-390-5160

Debbie Moloznik (CO), r ... 818-515-0377

Heather Petersen (CO), r . 719-683-8435

Catherine Siemiet (CO), r . 719-942-5311

Dianne Stanley (MT), R 406-652-4061

Technical Delegates, RMDS sanctioned shows only

Joan Clay 970-420-0887

Jeannette Hillery 303-494-7718

Mary Jo Hoepner 719-495-3648

Mindy Maguire 720-301-0089

Dee Stiers 970-876-2987

USDF Certified Instructors

Training - Second

Julie Burt 719-431-2342

Jill Cantor Lee 970-209-8491

RaeAnn Cook 970-225-1408

Janet "Dolly" Hannon 303-279-4546

Ellene Kloepper 303-523-0191

Clayton Martin 719-379-3716

Bridget Milnes 303-660-4986

Kristi Wysocki 303-648-9877

Training - Fourth

Simone Ahern 719-749-9274

Nancy DeVaney 303-681-2516

Loma Fowler 303-841-0417

Sarah Martin 719-379-3716

Kathy Simard 720-981-4448

Melinda Weatherford 970-484-5218

EQUUSSOMA INTERNATIONAL, LLC

Embodiment & Enrichment for horses & humans

Somatic Equestrian Coaching Professional & Amateur Equestrians Recreational Equestrians

Generally defined, Somatic Equestrian Coaching is a process of establishing a more symbiotic (interrelational) and synchronized (attuned) relationship between you and your horse(s). Through my professional training as a somatic practitioner in working with human brain and nervous system functioning, I have adapted my somatic training, based on credible academic research, to the horse-human relationship for Somatic Equestrian Coaching as well. Somatic Equestrian Coaching is designed to inform equestrians about the recent findings in neurobiology and psychophysiology, and more specifically, the implications of these findings as related the interplays that occur in the horse-human relationship. In other words, I specialize in working with the interconnected operations of the brain and nervous system

functioning between horses and humans to enhance contact and relationship and optimize performance. My Somatic Equestrian Coaching approach serves well to recreational equestrians and amateur or professional equestrians performing in the show arenas.



Nathan P. Lee, MA, BCC. Psy.D.c.

(940) 255-9312

equussoma@gmail.com

<http://equussoma.vpweb.com/default.html>

A NEW GENERATION OF SHIRES AWAITS.



© Kelly Lynn Photography

Mufasa 'X'



MUFASA 'X' **2007 REGISTERED SHIRE STALLION**

2012 Grand Champion Stallion — Ohio State Fair.

AI — shipped semen. Excellent service; inquiries always welcomed.

Please visit our website at SilverDrache.com to learn more about Mufasa.



SILVER DRACHE FARM
DR. & MRS. BARRY (ANDREA) EPPLEY
INFO@SILVERDRACHE.COM

317.679.7433
WWW.SILVERDRACHE.COM

Rocky Mountain Dressage Society is proud to present

A Symposium with George Williams

The Training Scale



January 10

is the deadline for rider's
to submit their applications.

More Information: rmds.org.

This means it must be

RECEIVED by the 10th.

Send to the RMDS
Central Office.

OPEN TO ALL RIDERS

Feb. 23 & 24, 2013

At Tomora Training Center, Greeley, Colorado

Private Rides @ \$150/ride

Auditing \$45/day or \$80/weekend (\$50/day at door)

Special Friday Evening Session for Instructors with George at host hotel

\$25 or free if auditing/riding the weekend

Watch the Centaur, www.rmds.org and future emails for details & rider application process

**From his classical dressage background to a top International competitive career,
George Williams has something to offer everyone with an interest in dressage.**

George started riding dressage seriously in 1973. He traveled to Germany as a 17 year old to study and earned his German Bronze Rider Medal. He returned to the US, won 2 national AHSA and USDF Championships in 1981, and then followed his mentor Karl Mikolka to ride the famed Lippizan Stallions of Tempel Farms in Illinois for 20 years. He left Tempel Farms to follow a career path that led him to competing in dressage on the International level. In 2003, George and Rocher, owned by Chuck and Joann Smith, placed 5th in the World Cup in Sweden, won the USDF Grand Prix and Grand Prix Freestyle Horse of the Year and they were named Dressage Horse of the Year by the Chronicle of the Horse. He has continued to be a strong competitor Nationally and Internationally on many horses. George is also now President of the United States Dressage Federation, a member of the USEF Board of Directors and Dressage Committee, along with a contributing author to several books and publications.

RMDS Members See New USEF Tests, Let Les Bons Temps Roulez in New Orleans

By Linda Gaber, Foothills Chapter

Almost a dozen RMDS members traveled to the 2012 Adequan/United States Dressage Federation Annual Convention Dec. 5-8. They enjoyed 70s-degree weather, a soaking rain, and equine education and camaraderie. Some also were entertained in a nighttime search for French Quarter ghosts, powdered sugar-topped beignets and chicory coffee at Cafe Du Monde, and memorable shrimp, crawfish, oyster and fish fare at Emeril's, Court of the Three Sisters, Antoine's, Commander's Palace, K Paul's Louisiana Kitchen and other classic New Orleans restaurants. The Sheraton New Orleans was the convention hotel and meeting site.

Convention highlights included a video presentation by USDF Hall of Fame member Hilda Gurney discussing *Harmonizing With Your Horse*, her topic for the 2013 Nutrena/USDF Adult Clinic Series. Members also celebrated horse and rider awards at a Salute Gala & Annual Awards Banquet with a glittering Mardi Gras parade and masquerade featuring Olympic riders and other celebrity guests. These included Michael Poulin, Carol Lavell, Steffen Peters and Shannon Peters.

Many at the convention participated as members of more than a dozen USDF committees. They met to complete and submit reports, list committee accomplishments and propose 2013 objectives to GMO (group member organizations), such as members of the Rocky Mountain Dressage Society. Committees include Bylaws, Historical Recognition, Membership, Nominating Committee, Competition Management, Instructor Trainer, Judges, Adult Programs, Awards, Technical Delegates, Regional Championships, Sport Horse and FEI Junior/Young Rider. The participating (voting) GMO members at the convention approved rule changes, elected Region 2, 4, 6 and 8 previously nominated regional directors, reviewed updated committee policies and programs, and approved the federation's April 2013-March 2014 proposed budget. Their voice vote accepted treasurer Steven Schubert's estimated \$4,050,911 projected revenue, \$4,116,211 proposed budget expense, \$185,000 investment income and \$0 budget shortfall. They also re-elected Schubert and president George Williams.

One educational panel presentation introduced three new USEF rider tests for Training through Second Level. The three-year project was the work of the USEF Dressage Committee and appointees of the USDF Executive Board. The tests were designed to "as much as possible, remove the horse's quality from the evaluation process, instead focusing upon the rider's ability," said USDF's Lisa Gorretta, a panelist and test task force chair. The tests can be ridden now and included on prize lists for 2013. An awards program is being considered. Clinics explaining what judges are looking for in the new tests, as well as Ride-A-Tests, likely will be conducted in the RMDS region this year.

This panel also encouraged show riders to complete and sign USEF evaluation forms noting their complaints and compliments. These forms are available at shows. "USEF would like to know about problems," said Gary Rockwell, FEI 5* judge, representing the USDF Judges Committee. "USEF won't act unless (complaint) forms are signed" and follow-up is difficult, he said.

Attendees learned about the new USDF marketing tag line: USDF – Your Connection to the American Dressage Community. A marketing guide now is available for all GMOs to use on the USDF web site.

Also new this year is vendor Equisens' portable equestrian balance sensing system, introduced in August. Attendees tried out the device by sitting on the Smart Ride fabric pad attached to a saddle seat, then moving their right and left seat bones to have their balance sensed and reported by the system's vibration and lights. Olympian Gurney and clinician/author Mary Wanless ("Ride With Your Mind") are using the \$1,400 product with students and clinics. Other equine vendors shared information on Adequan i.m. joint treatment products, SmartPak supplements and arena footing. John Hall advised riders to avoid and reduce equine colonic ulceration and colic with Succeed and Freedom Health products. He also suggests that feeding them with "soaked beet pulp, Purina's Chaff and a light sprinkling of grain is a way to insure that

problems" of hind gut acidosis and bacterial intervention don't happen.

Additional presentations for instructor/trainers, L graduates, and a Sport Horse Seminar were scheduled. GMO representatives shared information on planning and running shows, insurance and their other responsibilities. A Youth Open Forum focused on the USEF/USDF Dressage Seat Medal Program and other youth opportunities.

Insurance for horse medical costs, as well as for damage related to horse ownership, was presented by equine insurance agents. Large barns and multiple-horse owners would be smart to consult with an equine attorney, accountant, as well as an insurance agent to be protected from the liability of horse ownership, said Shawna Dietrich of Dietrich & Company Equine Insurance Services. In these days of severe weather and other natural disasters, equine policy premium prices are increasing, and can be softened if policy holders increase their policy deductible amounts, she said. Insure a horse trailer on an auto policy or with equine equipment, saddles and tack on a personal insurance policy. Instructors should have a policy that stays in effect as they travel to clients. Barn owners should require that all independent contractors, such as trainers and farriers, have their own liability insurance and are able to produce a certificate of insurance, she said.

The GMO Basket tradition continued this year, as RMDS and other regional organizations brought baskets representing their area filled with food, clothing for horses and riders, picture frames, wine and other items. These were won by attendees in drawings that livened up committee and business agendas at the Board of Governors meeting. Outside these meeting rooms, attendees shopped at tables of silent auction items. These included deer seat breeches, plug-in bit warmer, stirrup and saddle protectors, jewelry, clothing, leather products, ulcer treatment, Christmas ornaments, dressage-motif soaps, note cards, tack, original art, horse blankets and more.

Cont'd on pg 27

Shows and Events

All shows are RMDS recognized except schooling shows.

JANUARY 2013

- 7 **RMDS Executive Meeting, Romano's Italian Restaurant, Highlands Ranch, CO**
Contact RMDS Central Office 720-890-7825 rmds@rmds.org
- 12 **Judges Continuing Education with Gary Rockwell Stellar Farm, Parker, CO – OPEN TO ALL**
Contact: Education Chairman, 720-890-7825 education@rmds.org

FEBRUARY 2013

- 9 **RMDS Show Manager & TD Clinic Comfort Suites, Castle Rock, CO – OPEN TO ALL**
Contact: Education Chairman, 720-890-7825 education@rmds.org
- 23-24 **George Williams Symposium Tomora Training Center, Greeley, CO – OPEN TO ALL**
Contact: RMDS Central Office, 720-890-7825, rmds@rmds.org

MARCH 2013

- 9-11 **Rocky Mountain Horse Expo, Denver, CO**
- 14 **RMDS Executive Meeting, Romano's Italian Restaurant, Highlands Ranch, CO**
Contact RMDS Central Office 720-890-7825 rmds@rmds.org
- 16 **Ride-A-Test Test A Wine-Somerset Farm, Longmont, CO**
Contact Kim Lampert 303-638-3606 kim@somersetfarms.com
- 16-17 **GVDS Spring into Fun Schooling Show Mesa County Fairgrounds, Grand Junction, CO**
Contact: Inka Spatafora 970-260-2660 classicaldressage@earthlink.net

APRIL 2013

- 19-21 **Dressage for the Cure at the Peak Colorado Springs, CO – USEF**
Contact: Heather Petersen, 719-683-8435, slush@drwgw.net
- 20-21 **USDF Region 5 Adult Clinic, Arizona**
Contact: USDF usdf@usdf.org
- 27 **RMDS Show I at Sun Prairie, Peyton, CO**
Contact: Simone Ahern 719-749-9274
- 27 **BVD Ride-A-Test, Singletree Farm, Boulder, CO**
Contact: Beth Geier, 303-673-9840, bethgeier1@comcast.net
- 27 **Whispering Winds Farm Schooling Show, Colorado Springs, CO**
Contact Mary Hallmark 719-488-0333 painthorse50@msn.com
- 28 **Boulder Valley Spring Fling, Singletree Farm, Boulder, CO**
Contact: Beth Geier, 303-673-9840, bethgeier1@comcast.net

MAY 2013

- 4-5 **GVDS Spring into Fun Schooling Show Mesa County Fairgrounds-Grand Junction, CO**
Contact: Inka Spatafora 970-260-2660 classicaldressage@earthlink.net
- 9 **RMDS Executive Meeting, Romano's Italian Restaurant, Highlands Ranch, CO**
Contact RMDS Central Office 720-890-7825 rmds@rmds.org
- 11-12 **Rocky Mountain I & II, Somerset Farms, Longmont, CO – USEF**
Contact: Heather Petersen, 719-683-8435, slush@drwgw.net
- 18 **CDEC Ride-A-Test with Gwen Ka'awaloa "r" Cheyenne, WY**
Contact Jane Swanhorst-Ringolsby 307-634-2870 swanhorst@aol.com
- 19 **Autumn Hill Spring into Summer Show AHIEC, Longmont, CO**
Contact: Julie Barringer-Richers, jabr57@gmail.com
- 25 **RMDS Show II at Sun Prairie, Peyton, CO**
Contact: Simone Ahern 719-749-9274

- 25 **Whispering Winds Farm Schooling Show, Colorado Springs, CO**
Contact Mary Hallmark 719-488-0333 painthorse50@msn.com
- 31-Jun 2 **High Prairie Dressage I, II, III**
Colorado Horse Park, Parker, CO – USEF
Contact: Glenda McElroy 818-841-3554 glenda@glenroys.com

JUNE 2013

- 1-2 **GVDS Spring into Fun Schooling Show Mesa County Fairgrounds, Grand Junction, CO**
Contact: Inka Spatafora 970-260-2660 classicaldressage@earthlink.net
- 8-9 **CDEC Open Dressage Show – Cheyenne, WY – USEF**
Contact: Bill/Sue Gentle 307-634-1743 sbgentle@hotmail.com
- 15-16 **Rocky Mountain Summer I & II Somerset Farms, Longmont, CO – USEF**
Contact: Heather Petersen, 719-683-8435, slush@drwgw.net
- 19-22 **Junior Camp, Tomora Training Center, Greeley, CO**
Contact: Julie Haugen
- 21-22 **Sage Creek I & II, Sage Creek Equestrian, Heber, UT – USEF**
Contact Sue Jero 801-330-5763 dressageshow@sue@aol.com
- 23 **USDF Region 5 Adult/Team Competition, Tomora Training Center, Greeley, CO**
Contact Beth Geier 303-673-9840 bethgeier1@comcast.net
- 23 **Centaur Rising Dressage Show I Anchorage Farms, Pine, CO**
Contact Kris Cooper 303-838-5086 kris@anchorage farm.com
- 29 **Whispering Winds Farm Schooling Show, Colorado Springs, CO**
Contact Mary Hallmark 719-488-0333 painthorse50@msn.com
- 29-30 **Autumn Hill Festival I & II, Longmont, CO – USEF**
Contact Heather Petersen, 719-683-8435, slush@drwgw.net

JULY 2013

- 6-7 **Rocky Mountain III & IV, Somerset Farms Longmont, CO – USEF**
Contact Heather Petersen 719-683-8435 slush@drwgw.net
- 6-7 **Millbrook Farms Summer Dressage Festival Fairfield, UT – USEF**
Contact Jan Lawrence 801-631-2516 millbrk@xmission.com
- 11 **RMDS Executive Meeting, Romano's Italian Restaurant, Highlands Ranch, CO**
Contact RMDS Central Office 720-890-7825 rmds@rmds.org
- 12-13 **Dressage at the Peak Summer Warm-Up & II Fountain Valley School, Colorado Springs, CO – USEF**
Contact: Heather Petersen 719-683-8435 slush@drwgw.net
- 14 **Centaur Rising Dressage Show II, Anchorage Farms, Pine, CO**
Contact: Kris Cooper 303-838-5086 kris@anchorage farm.com
- 16-21 **NAJYRC**
- 26-27 **Sage Creek III & IV, Sage Creek Equestrian Heber, UT – USEF**
Contact Sue Jero 801-330-5763 dressageshow@sue@aol.com
- 27 **RMDS Show III at Sun Prairie, Peyton, CO**
Contact Simone Ahern 719-749-9274
- 27 **Whispering Winds Farm Schooling Show, Colorado Springs, CO**
Contact Mary Hallmark 719-488-0333 painthorse50@msn.com
- 27-28 **Autumn Hill Festival III & IV – Longmont, CO – USEF**
Contact Heather Petersen 719-683-8435 slush@drwgw.net

AUGUST 2013

- 2-4 **Dressage in the Rockies I, II, III**
Colorado Horse Park, Parker, CO USEF
Contact Glenda McElroy 818-841-3554 glenda@glenroys.com
- 10-11 **Millbrook Farms Summer Dressage Show**
Fairfield, UT – USEF
Contact Jan Lawrence 801-631-2516 millbrk@xmission.com
- 11 **Centaur Rising Dressage Show III**
Anchorage Farms, Pine, CO
Contact Kris Cooper 303-838-5086 kris@anchorage farm.com
- 16-18 **Paragon I, II, III & CDI*****
Stanley Park Fairgrounds, Estes Park, CO – USEF
Contact Heather Petersen 719-683-8435 slush@drwg.net
- 24-25 **Utah Dressage Society I & II, Wasatch Event Center, Heber, UT – USEF**
Contact Nance Allen 801-274-1288 nance@xmission.com
- 24 **Foothills Chapter Ride-A-Test**
Roberts Ranch, Littleton, CO
Contact Lori Mitchell 303-816-2375 bandwdressage@gmail.com
- 24 **Pendragon Stud Dressage Show – Larkspur, CO**
Contact Leslie Terry 303-688-4147
- 24 **Whispering Winds Farm Schooling Show, Colorado Springs, CO**
Contact Mary Hallmark 719-488-0333 painthorse50@msn.com
- 25 **Boulder Valley So Long to Summer Show**
Sextant Farm – Longmont, CO
Contact: Beth Geier-303-673-9840 bethgeier1@comcast.net
- 31 **RMDS Show IV at Sun Prairie – Peyton, CO**
Contact: Simone Ahern 719-749-9274
- 31-Sept 1 **GVDS Fall Show**
Mesa County Fairgrounds, Grand Junction, CO – USEF
Contact: Inka Spatafora classicaldressage@earthlink.net

SEPTEMBER 2013

- 8 **Foothills Chapter Last Chance Show, A Rising Star, Arvada, CO**
Contact Lori Mitchell 303-816-2375 bandwdressage@gmail.com
- 12 **RMDS Executive Meeting, Romano's Italian Restaurant, Highlands Ranch, CO**
Contact RMDS Central Office 720-890-7825 rmds@rmds.org

- 18 **Rocky Mountain Sport Horse Championships, Colorado Horse Park, Parker, CO – USEF**
Contact Heather Petersen 719-683-8435 slush@drwg.net
- 19-22 **USDF/Great American Region 5 Championship, Parker, CO – USEF**
Contact Heather Petersen 719-683-8435 slush@drwg.net
- 19-22 **RMDS Championship & Open Show, Parker, CO – USEF**
Contact Heather Petersen 719-683-8435 slush@drwg.net
- 28 **Whispering Winds Farm Schooling Show, Colorado Springs, CO**
Contact Mary Hallmark 719-488-0333 painthorse50@msn.com

OCTOBER 2013

- 10 **RMDS Executive Meeting, Romano's Italian Restaurant, Highlands Ranch, CO**
Contact RMDS Central Office 720-890-7825 rmds@rmds.org
- 10-13 **Dressage Festival of Champions, Kentucky Horse Park, KY – USEF**
Contact USEF
- 12-13 **GVDS Spring into Fun Schooling Show, Mesa County Fairgrounds, Grand Junction, CO**
Contact Inka Spatafora 970-260-2660 classicaldressage@earthlink.net
- 19 **Whispering Winds Farm Schooling Show, Colorado Springs, CO**
Contact Mary Hallmark 719-488-0333 painthorse50@msn.com

NOVEMBER 2013

- 9 **RMDS Board of Governors Meeting**
- 9 **RMDS Awards Banquet**

For updates to the calendar, go to www.rmds.org

THESE EVENTS ARE DEPENDENT UPON VOLUNTEERS.
IF YOU CAN HELP, PLEASE CONTACT THE EVENT ORGANIZER!

EXECUTIVE BOARD MEETINGS – open to all – 2nd Thursday of the odd months, 6:30 pm. Contact RMDS Central Office for location

RMDS-SPONSORED EDUCATIONAL EVENTS

All events are open to everyone to audit or participate unless otherwise stated. A great opportunity to continue your learning!

2013

Jan 12	Judges' Continuing Education with Gary Rockwell, Stellar Stables, Parker, CO – OPEN TO ALL
Feb 9	Show Management & TD Training, Comfort Suites, Castle Rock, CO – OPEN TO ALL
Feb 22	Trainers' discussion with George Williams – TBA
Feb 23-24	Symposium with George Williams, Tomora Training Center, Greeley, CO
June 19-22	Junior Camp, Tomora Training Center, Greeley, CO
June 23	USDF Region 5 Adult/Team Competition-Tomora Training Center-Greeley, CO
Sept 18	Breed Show
Sept 19-22	RMDS Championships & USDF/Great American Region 5 Championships – Colorado Horse Park, Parker, CO

For details on these and other RMDS events:

Contact Jon Haugen, the RMDS Education Chairman, at 970-217-7820 defiancesport@q.com. Also, read the Centaur, and go to www.rmds.org, or contact the RMDS Central Office at 720-890-7825, rmds@rmds.org.

Region 5 Report

It was a great week at the USDF Convention in New Orleans! Many thanks to those of you who joined us. It's always a great chance for networking, catching up with old friends and participating in the governance of our great sport. Our two regional meetings went very well and a lot of great information was exchanged. I enjoyed seeing so many people at our meetings. Some key things to come out of the regional meetings:

- New committee representatives for the Historical and Nominating committees. Many thanks to Kay Lorenzen for her years of service on the Nominating Committee.
- We are discontinuing the Region 5 Scholarships at this point in time and instead, we have instituted a \$200 reimbursement grant for those attending the USDF Convention as USDF Region 5 PM Delegates for the 2013 and 2014 USDF Conventions. An attendance policy for those elected was also discussed.
- A lot of discussion about judges for various shows and some new program rules for Level 3 shows, along with some very big changes to the USDF Instructors' Certification Program.
- USDF Treasurer Steven Schubert is available at no charge to GMOs if they would like to have their fiscal controls reviewed and other financial procedures assessed.
- Discussions of the 2012, 2013 and 2014 Regional Championships and the inaugural 2013 National Championships.

Region 5 also had several full tables at the USDF awards banquet. Congratulations to everyone on their medals, their Horse of the Year standings and their All Breed Awards. We had a lot of award winners this year.

The Dressage Foundation is proud to announce this year's recipients of the Carol Lavell Gifted Memorial Fund Scholarships for Adult Amateurs.



The French Quarter carriage mules looked happy and healthy.

Each will receive a \$1,000 scholarship to enable them to set aside quality time in concentrated training with a horse they own, with a trainer of choice, away from the daily pressures of job and family. Congratulations to our two Region 5 Recipients:

- **Michelle Dorsey** (TX) and her horse, Bertolucci, will train with Sarah Martin. Michelle is a member of Paso del Norte Dressage Society.
- **Shannon Lemons** (CO) and her horses, Shaman and Deven, will train with Sarah Martin. Shannon is a member of Pike's Peak Dressage Society, a chapter of Rocky Mountain Dressage Society.

The Rocky Mountain Dressage Society will be hosting a symposium with George Williams Feb. 23-24, at the Tomora Training Facility in Greeley. This will be a great chance for auditors and riders. Auditing is \$45 per day or \$80 for the weekend if reserved ahead of time or \$50 per day at the door. For more information, contact RMDS at rmds@rmds.org or www.rmds.org. There will also be a special Friday evening

closed door session for instructors. The cost is \$25 or it's free if you're auditing or riding during the weekend.

The Tucson Dressage Club will be hosting a symposium with Charles de Kunffy May 18-19 at the Pima County Fairgrounds. There will be a lecture in the morning and demo riders in the afternoon. Cost is \$125 after Jan 1 and \$175 for non-members. De Kunffy is one of the greatest dressage clinicians of all time and this may be the final opportunity to see him in North America. Checks can be payable to TDC and mailed to Ursula Conway, 1125 Morning Star Drive, Rio Rico, AZ 85648. For more information, check their web page tucsondressageclub.org.

I hope everyone had a great holiday season and a good start to the New Year!

Till next month.

-Heather Petersen, Region 5 director

Education, Fun and RMDS in the Big Easy

Cont'd from pg 8


presentation to be published in an upcoming issue of the Centaur. I sat next to a fellow RMDS member who also felt that this was presented in a very easy and informative way.

Following this presentation was the open discussion, "Looking Back at London" (Olympics in 2012), with Steffen Peters, Ravel's owner Akiko Yamazaki and FEI 5* Judge Gary Rockwell on what viewers didn't see on TV. You will read more about that in the USDF Connection in the future. It was a great opportunity to see these three individuals and realize we are all just regular folks.

There was a GMO Roundtable that covered topics like insurance, membership, surveys, hiring show management, ETrack Program and some great reassurance that RMDS is doing a great job. We are, in some cases, light years ahead of some other GMOs and all GMOs are dealing with some of the same issues. There were some good ideas and suggestions that came out of these discussions and I hope to discuss them with the RMDS board at our first meeting.

The gala and awards banquet Saturday evening Dec. 8 ended my time in New Orleans. Michael Poulin and his family and friends were in attendance to witness his induction into the USDF

Hall of Fame and there was not a dry eye, including Steffen Peters, once Ravel was also inducted. The night went on to see many of our own RMDS members getting medals and awards.

I encourage you all to start planning to attend this year's USDF Convention, Dec. 4-7 in Lexington. You can run for a PM delegate (you can speak to Heather Petersen for more information) and hold some votes for our organization or you can just go to meet new people, enjoy some of those you may know, but out of the "show setting," and just have a good time. 

**THE**
TACK COLLECTION



EXPERTISE YOU CAN TRUST



Visit our new location for:

- Saddles
- Girths, Bridles, Leathers & leather products
- Fine Art by Bev Harrison
- Breeches & Bits by Jeffries of England

Professional Saddle Fitting services by
Beverly Harrison, certified saddle fitter with
the Society of Master Saddlers, U.K. Ltd.



Follow us on Facebook!

Please Call for Store Hours
104 N. Harrison Street in Lafayette
(corner of Harrison & Simpson St) phone: 303/666-5364
fax: 303/604-2783 • email: info@tackcollection.com

PRESTIGE • KEITH BRYAN • CLIFF BARNSBY • FRANK BAINES • EQUIPE • TRILOGY

www.tackcollection.com

CONTINUING EDUCATION – “TD” & SHOW MANAGEMENT

Saturday, Feb. 9

OPEN TO EVERYONE! Learn the Inner Workings of a Show.

Technical Delegates: 8:30 am - 12:15 pm with Veronica Holt (USEF TD)

- Want to find out what happens behind the scenes of a show?
- Want to be a TD?
- Need to hone your skills?
- Need clarification of the rules and/or become aware of the new ones?

Show Managers/Secretaries: 1:00 pm with Heather Petersen

- What are the responsibilities of the secretary vs. show manager
- Scheduling, general logistics, necessary forms and information
- Handbook available for \$30

RMDS is strongly encouraging all show management to attend. There are more upcoming changes in the rules!

This workshop is for you!

Comfort Suites – Castle Rock
4755 Castleton Way, 303-814-9999

COST

One session only \$35 Non RMDS members \$45
Both sessions \$50 Non RMDS members \$60
At the door - \$65 for everyone.

Reservations are necessary to determine the number of handouts.

Please fill out the form below and return with a check made payable to RMDS to:
Michelle Anderson | 302 Lionel Lane, Elizabeth, CO 80107



CONTINUING EDUCATION – “TD” & SHOW MANAGEMENT ENTRY FORM

Name _____

E-Mail _____ Phone _____

Address _____

City, State, Zip _____



RMDS MEMBERSHIP FORM

RMDS is a USDF Group Member Organization. All members are automatically USDF Group Members.

Individual Membership - \$60.00 (\$65 after January 1-late fee) Additional family members (same address) - \$45

Business Memberships - \$100.00 Centaur newsletter only - \$35.00 Life Membership - \$750.00

Life Business Membership \$1,000.00 - Transfer Life Business to new owner \$100.00

All business memberships include one individual membership.

Please include all information for person designated as individual member. If an adult amateur, include current copy of USEF AA card. All individual members will receive Centaur newsletter & the Omnibus.

Membership & horse registration acknowledged via postcard or email. Mail completed form with check made payable to RMDS.

Indicate Local Chapter (only one):

- | | | |
|--|---|---|
| <input type="radio"/> Arkansas Valley | <input type="radio"/> Foothills (Golden, Evergreen) | <input type="radio"/> Pikes Peak (Colo. Spgs. area) |
| <input type="radio"/> Boulder Valley | <input type="radio"/> Grand Valley (Grand Junction) | <input type="radio"/> Platte River (Greeley, E. Colorado) |
| <input type="radio"/> Colorado Springs | <input type="radio"/> High Plains (Parker, Littleton, Aurora) | <input type="radio"/> Wasatch Mountains (Utah) |
| | <input type="radio"/> N. Colorado (Ft. Collins, Loveland) | <input type="radio"/> Western Colorado (Aspen, Vail etc.) |

Name _____ Date of Birth _____

Address _____

City _____ State/ZIP _____

Phone (Home) _____ (Work) _____ (E-Mail) _____

USDF No. _____ Occupation _____

Names, DOBs, & USDF #s of additional family members _____

I pledge \$ _____ to go towards the RMDS Scholarship Fund. (Include amount with your membership check)

____ Please remove my name from lists sold by RMDS ____ Renewing member: Needs binder-**include additional \$8.00**

____ Referred by: _____: _____ Permanent Bridle Tag (a pair) **add \$50**

RMDS Horse Registration Form

Horses must be registered with RMDS to be eligible for year-end awards and for horse-of-the year award.

Eligibility starts on the date the envelope containing this form and check is postmarked.

☒ Both rider AND horse AND owner must be current before scores count toward year end awards and qualifying for RMDS championships.

The name and all information on this registration must be the same as that used on horse show entry forms.

Check One: ____ Lifetime Horse Registration - \$40.00 ____ Changes (i.e., owner or horse's name) - \$15.00

Horse Name _____ Sex _____ Breed (if known) _____

Registration # (include copy of papers. List grade if no registry papers available.) _____

Owner Name(s) (one owner must be an RMDS member) _____

Address of Owner _____

Owner's Phone (H) _____ (E-Mail) _____

Name of Representative (If owner is a business) _____

Sandra C. Hotz
Dressage training through FEI
 FEI 3* Judge
 Lessons
 Clinics
 Coaching
 Sales




303.817.2030
 Hotzdressage@gmail.com
 www.hotzdressage.com

FIRSTwestern
 TRUST
A Connected View

Private Banking • Investment Management • Wealth Planning • Trusts & Estates

David Johnson | Vice President | 303.640.2401 | David.Johnson@myfw.com
 Lynne Amerson | Portfolio Manager | 303.640.2414 | Lynne.Amerson@myfw.com

 MEMBER FDIC

Investment and insurance products and services are not a deposit, are not FDIC-insured, are not insured by any federal government agency, are not guaranteed by the bank and may go down in value. First Western Trust is a registered trade name of First Western Trust Bank.

HAPPY HORSE



TACK & SADDLE SHOP

PH: 970.484.4199 • happyhorsetack.com
 113 Peterson Street, Fort Collins, CO 80524

Bronze, Silver and Gold Medalist
 Dressage Instruction & Training
 Piaffe and Passage a Specialty
 Andalusian Stallions at Stud
 Clinics Offered, in-and-out of State




Email: classicallegacy@aol.com

Classical Legacy | *Frances Carbonnel*

Cell: 720-979-3120 www.classicallegacy.com

Specializing in Sports Psychology
 for Equestrians



Gargot Farms
 3833 West County Road 8
 Berthoud, CO 80513
 (970) 351-7121 (970) 443-5467
 www.gargotfarms.com

Dr. Margot P. Nacey (#1716)
 Licensed Clinical Psychologist

The Mental Advantage Program
EMDR, Brainspotting, Fear Reduction
Equine-assisted Psychotherapy
Imagery & Visualization
Performance Enhancement
Seminars and Clinics
Phone Consults Available, Skype



FOX CREEK
Mobile Equine Outfitters

(303) 413-0179

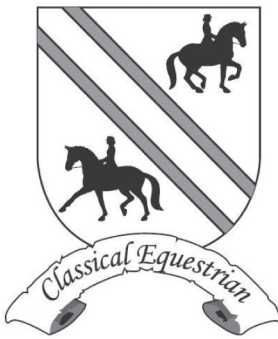
1750 30th Street, Ste. 86, Boulder, CO 80301



PHANTOM HILL FARM

RaeAnn Cook
 USDF certified Instructor
 Training & Lessons

(970) 225-1408 • PhFdressage@msn.com
 7808 S. Lemay Ave. • Fort Collins, CO 80525



IMPROVE YOUR RHYTHM,
 TIMING AND SUPPLENESS
 WITH LUNGE LESSONS
 AND CAVALLETTI WORK.

KELLY BOYD
 USDF SILVER MEDALIST
 720-480-8266
 OLEARYKELLY@HOTMAIL.COM
 CLASSICALEQUESTRIAN.COM

Les Bons Temps...

Cont'd from pg 19

Not all activities had horse themes. An afternoon rain left Vieux Carre streets wet and misty for an evening walking Ghost Tour and Hurricane cocktail at Pat O'Brien's before dinner. The former home of Voodoo priestess Marie Laveau was one stop. This free Creole woman of color born here about 1794 gained power, wealth and information as a hair dresser to white families. She sought valuable tidbits from her clients and their servants, then successfully wove the information with Roman Catholic saints, African spirits and occult characters into sought-after predictions, instilling fear and curing mysterious "illnesses" among fearful clients, according to the tour guide.

At the USDF General Assembly sessions Dec. 7 and 8, RMDS was recognized with awards for newsletter articles: Debbie Edmonson for "Put Her On a Horse" November 2011 Centaur, Com-

munications Chair Linda Gaber for "Conifer Fire Evacuation" June 2012 Centaur, and website design: Webmaster Michael Petersen.

Among other RMDS members in New Orleans were President Lori Mitchell, Secretary and USDF Region 5 Director Heather Petersen, Treasurer and Marketing Committee Chair Sharon Soos and Pete Soos, Foothills Vice President CC Ross, Dolly Hannon (USDF Freestyle Committee Chair), USDF Certified Instructor Kathy Simard, Jennifer and Kate Sotiroff, RMDS Vice President Gwen Ka'awaloa, Susan DeSylvia, Pikes Peak President Laura Speer and Miggy Monroe. 🐾



From left, Hilda Gurney talks with Dolly Hannon.

CLASSIFIEDS

Top Quality Saddle for Sale – almost new! Albion SLK Ultima NM tree 16-1/2" seat ("narrow seat" option). Supple black calfskin leather with grippy texture. Seat measures and rides as a 17". Looks new - only used a couple months and well cared-for. Extremely comfortable for the rider and great fit for a higher-withered horse. Selling due to purchase of new horse. Original warranty card and dealer invoice. \$3,495 new; asking \$2,600. Maureen (303) 748-9269 Lakewood. Email mmyask@comcast.net (pics avail)

RMDS RENTAL ITEMS

USDF OFFICIAL PONY MEASURING STICK:

Fee: \$25 Plus Postage

DRESSAGE ARENA:

Fee: \$100 per usage, plus Deposit

Contact the RMDS Central Office to reserve items,
and for more information:
720-890-7825 or rmds@rmds.org

SHOW MANAGERS & SHOW SECRETARIES

Wonderful booklet of
"How To" information.
\$30, postage included.
Contact RMDS Central Office
(720) 890-7825



ROCKY MOUNTAIN DRESSAGE SOCIETY

2942 PARK LAKE DRIVE

BOULDER, COLORADO 80301-5139

Nonprofit
Organization
US Postage
PAID
Parker, CO
Permit No. 22

ARTIST OF THE MONTH

Meghan Scott Molin

Meghan Scott Molin is an avid equestrian, designer, and wedding/equestrian lifestyle photographer, based in northern Colorado. She lives in Wellington with her husband, cat, dog, and two horses (an OTTB and a Swedish/Lippizan whom she hopes to compete Fourth Level in 2013). She is passionate about capturing the equine at play, and at work. She loves creating unique portraits of horses and their owners, and fine-art pieces of horses for their owners - whether under saddle at a show, or at home. She is now booking for her 2013 wedding, horse show and portrait season.

970.310.8526

www.msmolinphotography.com

